

POLITICS IN ACTION **@** **Queen Mary University**

Guest Lecture – Living Wage Campaign

Caroline Verdant (Community Organiser for Newham) – Citizens UK

Angela Moore (Headteacher) – St Antony's Catholic Primary School

Keynote Speaker: Changing Children's Lives Through The Real Living Wage




HSBC

Poverty
Pay at
HSBC

HSBC
exploiting
Eastenders

exploitation
@hsbc.com

Poverty
Pay at
HSBC

Sir John Bond
Scrooge

Poverty
Pay at
HSBC

Sir John Bond
Scrooge

TELCO'S
Living Wage Campaign

citizensuk

LIVING WAGE EXPLAINED

THE MINIMUM WAGE

Government minimum
for under 23s

What is it?

£9.18

Is it the law

Statutory

What age group is covered?

21 and older

How is it set?

Negotiated settlement based
on recommendations from
businesses and trade unions

Is there a London weighting?

No London weighting

NATIONAL LIVING WAGE

Government minimum
for over 23s

What is it?

£9.50

Is it the law

Statutory

What age group is covered?

23 and older

How is it set?

A % of median earnings, it aims
to reach 66% of median earnings
by 2024

Is there a London weighting?

No London weighting

REAL LIVING WAGE

The only wage rate based on
what people need to live

What is it?

£10.90 across the UK, £11.95 in London

Is it the law

Voluntary

What age group is covered?

18 and older

How is it set?

Calculation made according to the
cost of living, based on a basket of
household goods and services

Is there a London weighting?

Yes - separate higher rate for London

Our Agenda

Competing Agenda,
Positions, Policies

Opposition Agenda

The Power
Analysis

10
Decisive
Decision
making Power
or Influence

8
Active
Participant in
Decision-
making

6
Power to have
Major Influence
on decision-
making

4
Taken
into
Account

2
Can Get
Attention

0
Not on
Radar

**VERTICAL
AXIS:
Amount of
Power**

**HORIZONTAL AXIS:
Position or Perspective
on Competing Agendas**

Die Hard Support

Active Support

Inclined Towards

Inclined Against

Active Opposition

Die Hard Opposition

Real Living Wage in the Royal Docks

Competing Agenda, Positions, Policies

Minimum wage paid across the docks

Heathrow Airport

10
Decisive
Decision
making Power
or Influence

8
Active
Participant in
Decision-
making

6
Power to have
Major Influence
on decision-
making

4
Taken
into
Account

2
Can Get
Attention

0
Not on
Radar

The Board

Canadian Teachers Pensions
Kuwaiti Investment authority

Robert Sinclair, CEO

Liam McKay –
Director of
Corporate Affairs

Alison FitzGerald,
COO

Aaron Uthman –
Community
Relations

Mayor Fiaz-
Newham
Council

UEL

Shpresa

Money A+E

Living Wage
Team –
Newham
Citizens

Organised Allies

Airport Staff

Die Hard Support

Active Support

Inclined Towards

Inclined Against

Active Opposition

Die Hard Opposition



Liam McKay

Director of Corporate Services
London City Airport



Newham Citizens

Pupils from St. Antony's Catholic Primary School
Negotiation Team

citizensuk

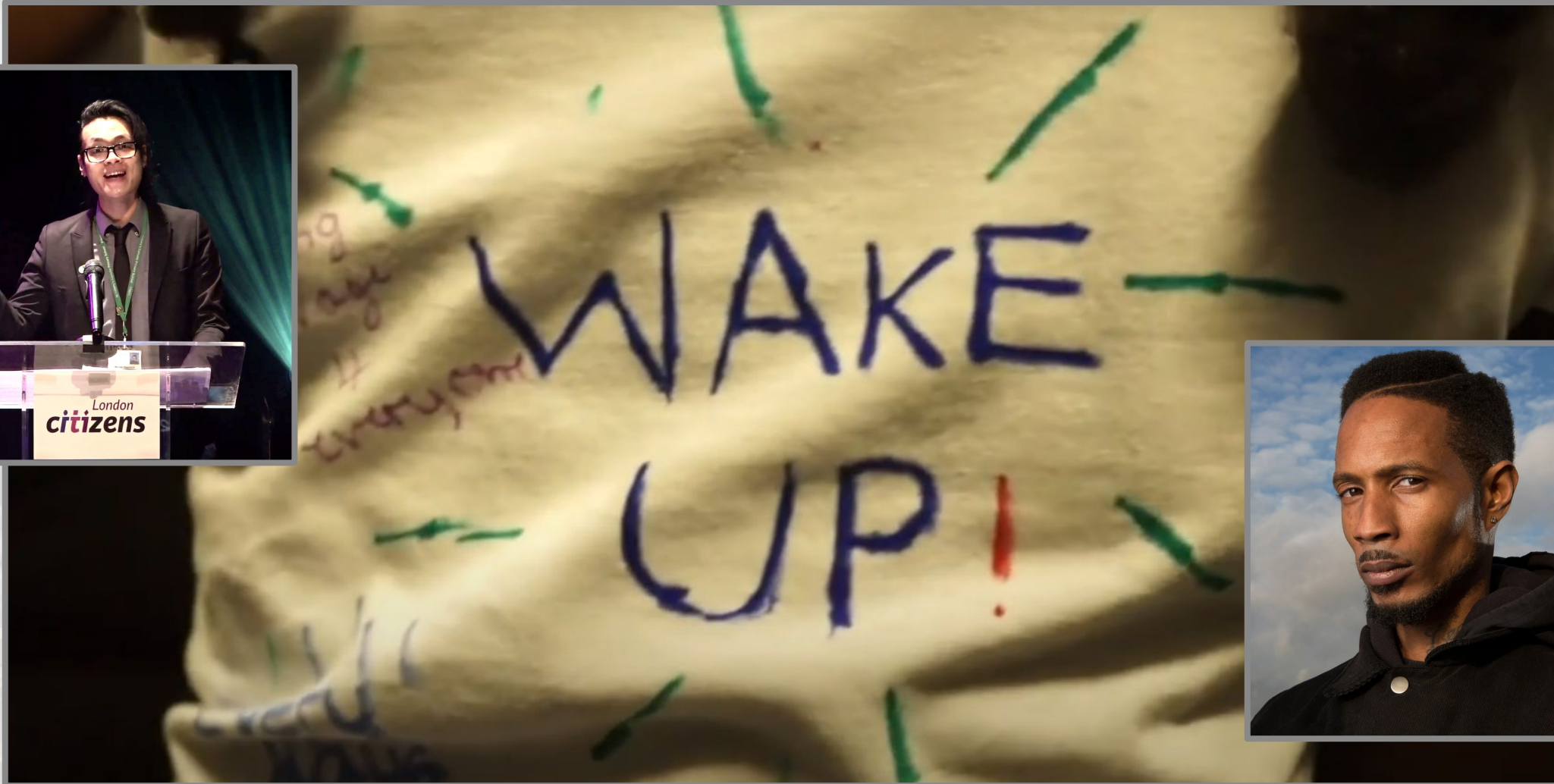
Michael Spiers, Chief People Officer at London City Airport, said:

“These commitments by London City Airport to the London Living Wage offer clear substance to our values as a business, to be more inclusive and serve the communities that surround us.”

“We believe that everyone should be entitled to a sustainable and decent living and it’s an important issue not just for the staff that will benefit but right across our campus. We’re grateful in particular to Newham Citizens and St Antony's R C Primary School in Newham who articulated the importance of it for young jobseekers and the future generation of our workforce.”

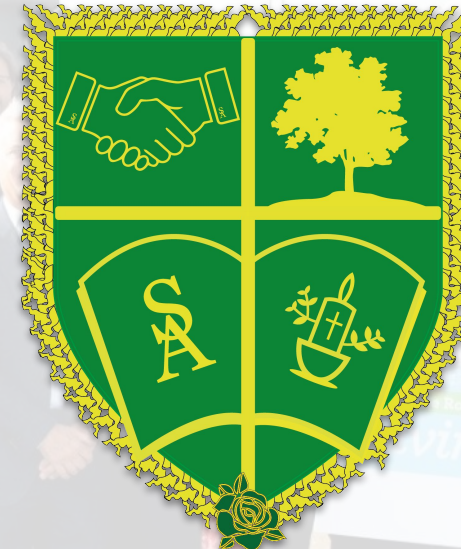
“London City Airport will be a champion for the London Living Wage across the East London business community as well as our current and potential supply chain as we take forward our £500 million transformation of the airport.”

REALIZE



<https://youtu.be/kQB35HI3UoE?si=u-UUNTh-0yqbujsD>





Angela Moore

St Antony's Catholic Primary School
Head Teacher



POLITICS IN ACTION

Why St Antony's is the face and Champions of the Living Wage in Newham...

Q & A

